

12015 Manchester Rd
 St. Louis, Mo 63131
 314-966-4100
 800-969-4102

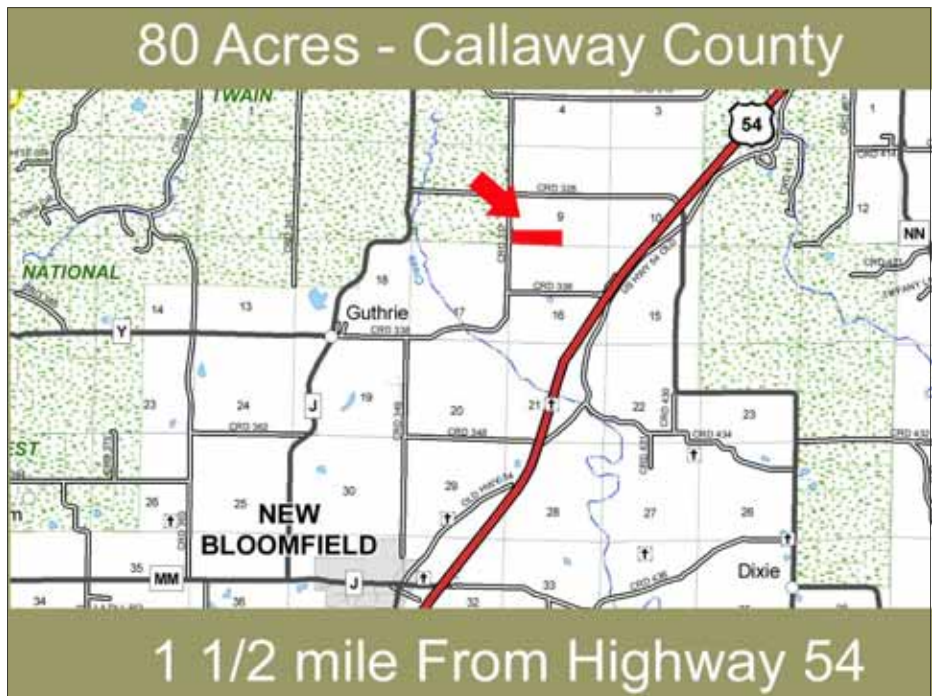


leon@leonmillerco.com
 Website:
 www.leonmillerco.com

**property listing: 80 Acres North of New Bloomfield, MO—Callaway Co.
 \$276,000 or \$3,450 per acre**

<i>Property Data</i>	
Utilities	Electricity, Co. Water
Zoning	Ag
Taxes	\$375
School Dist.	Fulton
Buildings	Barn, Home storage buildings
Total Ac	80
Pasture	65 Acres
Crop	0
Timber	150 Acres
Ponds	1

- Gently rolling pasture farm
- Less than two mile drive from I-54
- Three miles north of New Bloomfield

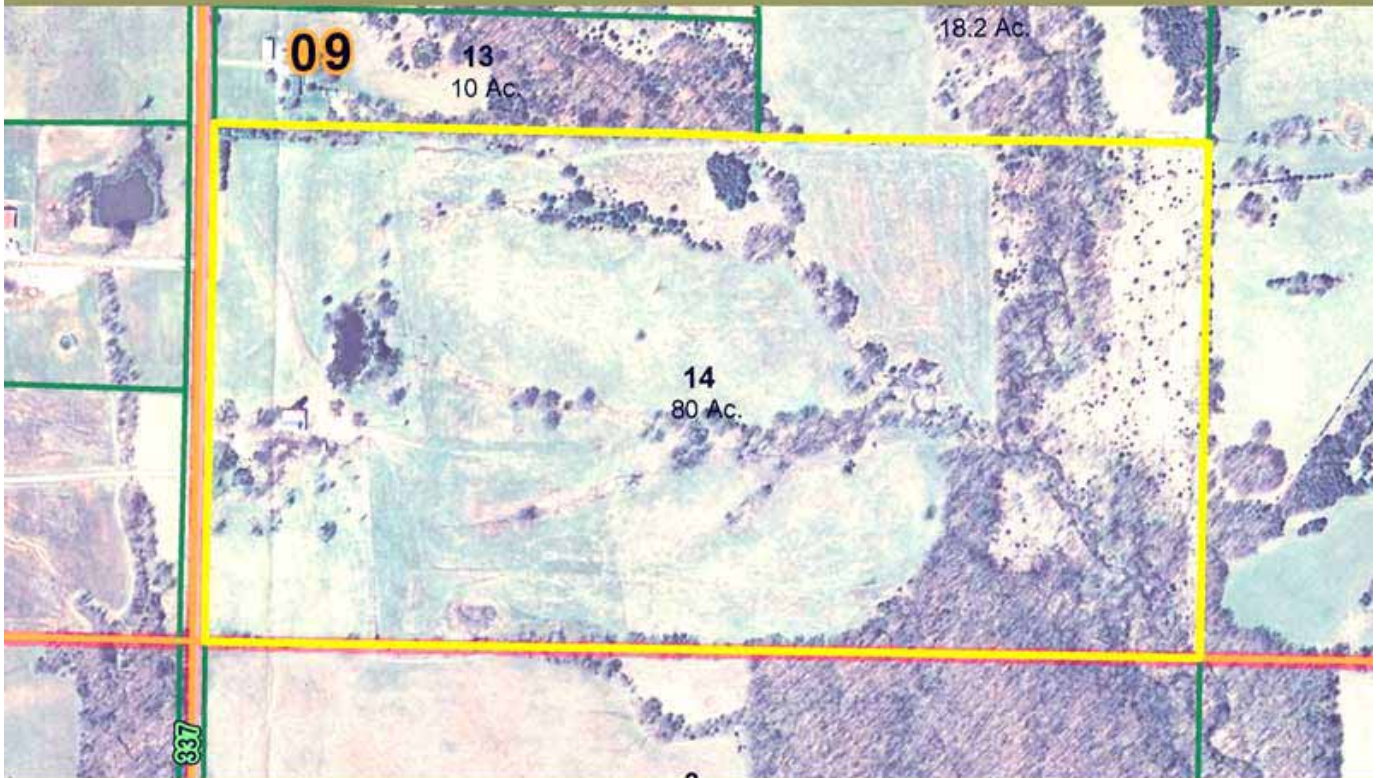


From Fulton, travel south on Highway 54 to County Road 328. Go west to County Road 337. Turn south and travel 3/4 of a mile to property on east side of county road.



property listing: 80 Acres

80 Acres - Callaway County



Callaway Co. Assessor Map

80 Acres - Callaway County



Home - Poor - Fair Condition

80 Acres - Callaway County



Old Barn