

12015 Manchester Rd  
 St. Louis, Mo 63131  
 314-966-4100  
 800-969-4102



leon@leonmillerco.com  
 Website:  
 www.leonmillerco.com

*Selling land is our business. Our only business.*

**property listing: 42 Acres on Navak private road—1 mile west of Gerald MO  
 Price : \$159,600**

**PROPERTY FEATURES**

- Excellent Hunting Land
- Scenic Home Sites
- Private Location
- Close to highway

*Property Data*

Utilities	none
Zoning	Ag
Taxes	\$240.00
School Dist.	Gasconade R-2
Buildings	None
Total Ac	42 Acres
Pasture	None
Crop	0 Acres
Timber	40 Acres
Ponds	None



**Map to 42 Acre - Franklin County**

From Union, travel west for 20 miles on highway 50 through Leslie and Gerald.  
 About 1 mile west of Gerald, turn south on Novak (a private road.)  
 Property located one-quarter mile south of highway 50.

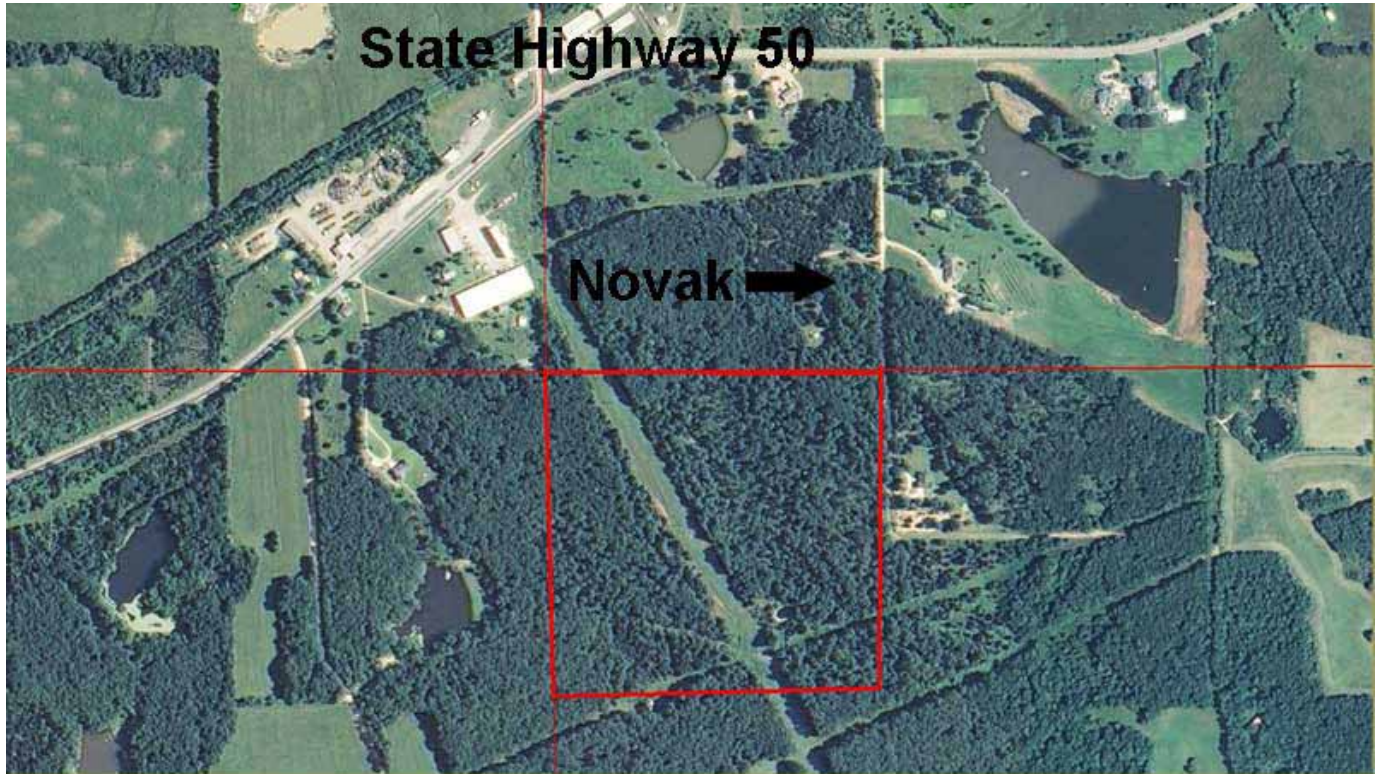


**42 Acres - Franklin County**  
 Novak Road, a private road leads from highway 50 to this 42 acres



**42 Acres - Franklin County**  
 From Novak/highway 50: The town of Gerald is 2 miles east,  
 Union is 20 miles east and 270/44 is 56 miles east

property listing: 42 Acres



42 Acres - Aerial Photo



42 Acres - Franklin County  
Gently sloping wooded paths



42 Acres - Franklin County  
Woods and pathways