

12015 Manchester Rd
 St. Louis, Mo 63131
 314-966-4100
 800-969-4102

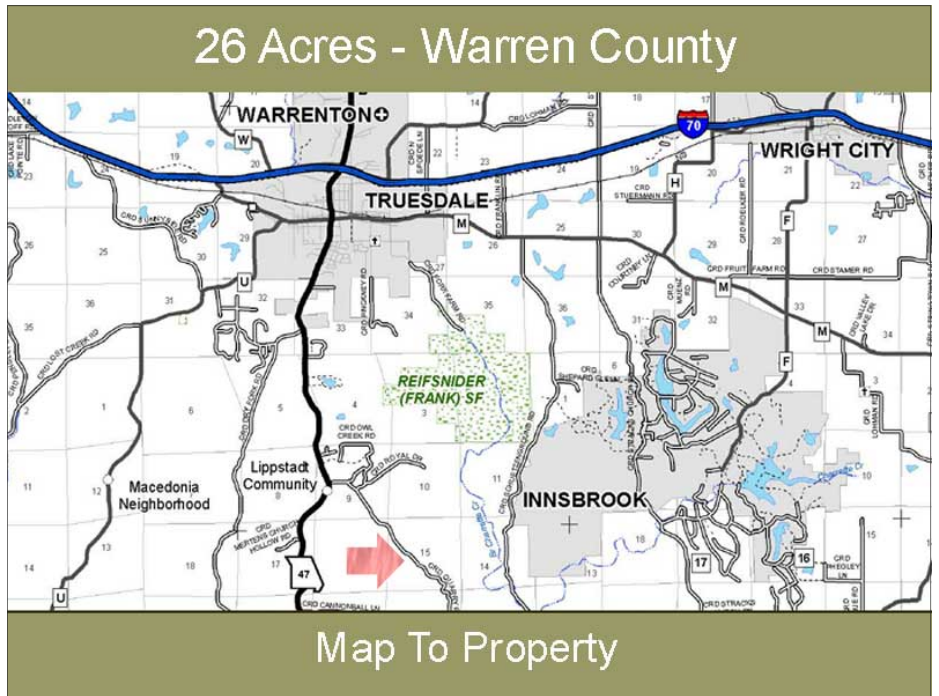


leon@leonmillerco.com
 Website:
 www.leonmillerco.com

property listing: 26 Acres South of Warrenton \$169,000

Hill top views... rolling woodland... low taxes... attractive home sites...
 just 4 miles south of Warrenton, Missouri

Property Data	
Utilities	None
Zoning	Ag
Taxes	\$17.67
School Dist.	Warrenton
Buildings	none
Total Ac	26
Pasture	None
Timber	26 Ac



Directions: From Warrenton travel south on State Highway 47 for 3 miles to Quarry Road. Go east on Quarry Road for 1 1/2 mile to property on North side of road





property listing: **26 Acres**

**26 Acres... All woods... gorgeous home sites... no restrictions...
easy 5 minute drive to Warrenton, Missouri.**

26 Acres - Warren County



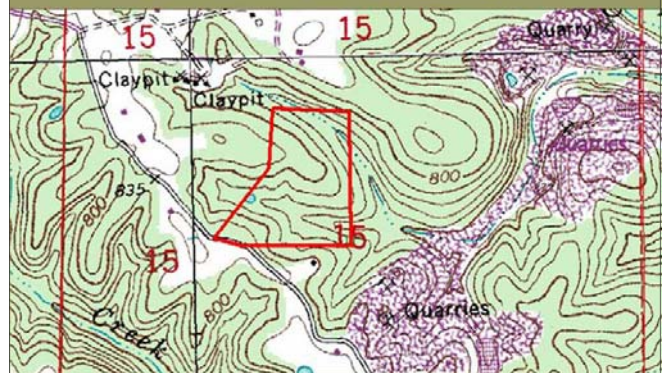
Aerial Photo

26 Acres - Warren County



Wooded Paths

26 Acres - Warren County



Topography Map